



The Sandy Lane Suite



The Sandy Lane Suite, located on the second floor of the Turtle Wing, overlooks the turquoise waters of the Caribbean Sea and offers the ultimate in elegant accommodation. The Sandy Lane Suite combines the privacy of residential-style luxury with the magic that is synonymous with Sandy Lane.

The Sandy Lane Suite measures approximately 7,360 square feet (683 square metres) and boasts four elegantly appointed en suite bedrooms, private elevator, a spacious open-plan design and direct access to the beach. A (heated) infinity pool on the edge of the terrace sets the scene to watch perfect sunsets. The Suite features a kitchen, a bar at the entrance to the living room, an open air dining area for exquisite entertaining or fun family meals, a TV area and a studio/office.



Stately elegance is married with every modern convenience. A dedicated, attentive staff is committed to delivering the ultimate in service excellence. Guests in The Sandy Lane Suite have complete access to all the facilities of the hotel including tennis, golf, the Spa and Watersports. Experience leisurely living with beautiful views of the Caribbean Sea.

ACCOMMODATION

Maximum number of guests: 10



BEDROOMS

Master bedroom (Bedroom 1) – Located across the hall, to the right of the living room. This room is well appointed in floral prints with touches of white, pink, ivory and blue. This room features a king bed with an overhead skylight for a breathtaking view of the stars, spacious bathroom with double vanity area, Jacuzzi tub with twinkling star lights overhead and a glass enclosed WC and bidet. A beautiful mosaic of a peacock decorates the shower. The room has a spiral staircase which leads to a cosy rooftop sundeck.



Bedrooms 2, 3 and 4 - These rooms are beautifully appointed with pastel tones and floral prints. Each features a king bed, double vanity area, Jacuzzi tub, rain shower, closet area with safe and a glass enclosed WC and bidet. The bedrooms share a balcony overlooking the waterfalls of the Spa and the tropical gardens at the front of the hotel.





LIVING/DINING ROOM



The living room and dining rooms are decorated in our signature Sandy Lane shades of pink with hints of ivory, gold, yellow and subtle grey. The open terrace area is a breath-taking panoramic view of the ocean. A powder room is located to the right of the living room and directly facing the terrace, there is a private ocean facing infinity pool, which is also heated.

Staff:- Dedicated housekeeper.

CAUTION

This pool is not supervised.

Minors should not be permitted near the pool unless supervised by a person 18 years or over.

Persons under the age of 12 years are not allowed in the pool unless accompanied by a person 18 years or over.

The art of diving is not to be practiced in this pool.

Amenities & Rates:

- Flat screen 52" TV with entertainment system in every room.
- Fully air-conditioned with ceiling fans.
- Infinity plunge pool overlooking the beach and the Caribbean Sea
- Fully stocked bar & fully equipped kitchen.
- Private elevator, staircase leading from the pool to the beach (this can be used instead of using the elevator to the lobby).
- Studio/office with printer, fax, copier. Private sundeck.
- Open dining area with seating for up to ten (10) persons.

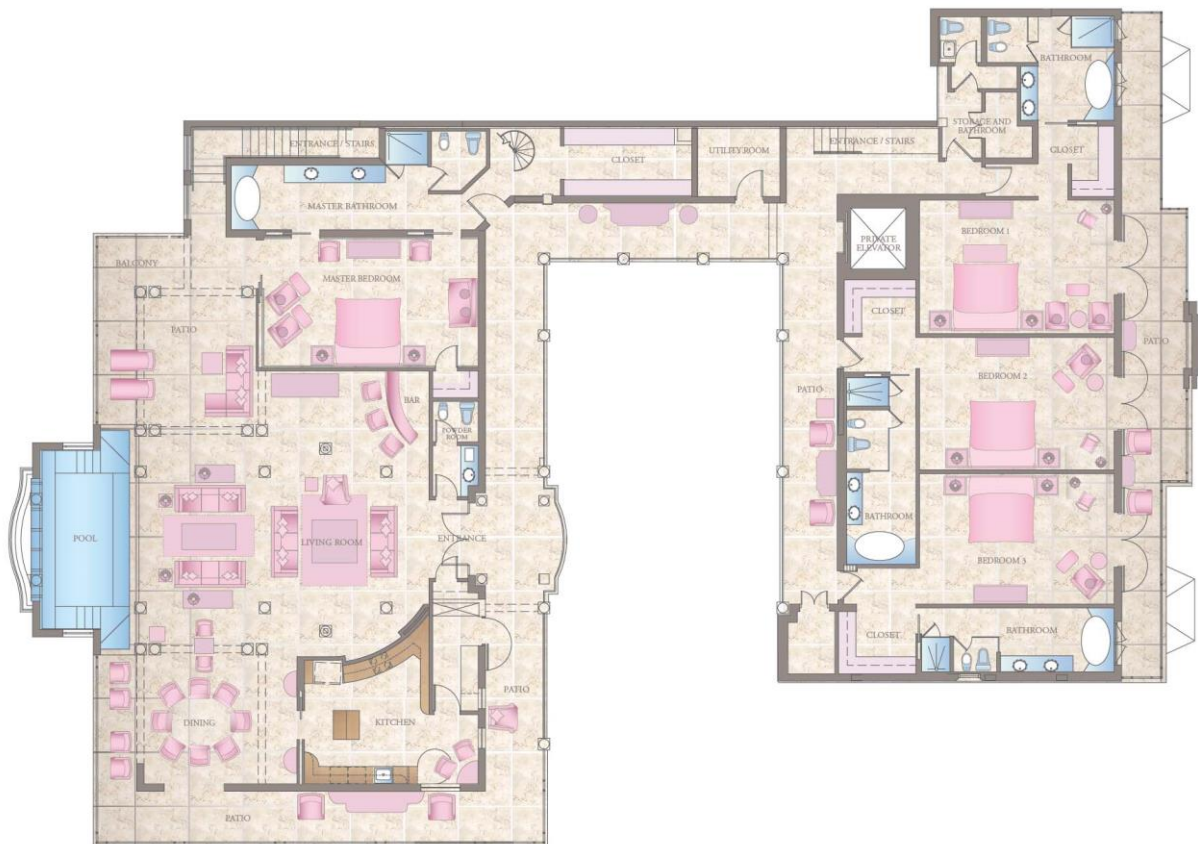
Period	Rate
<u>Festive</u> (17 Dec. 2020 – 06 Jan. 2021)	27,675
<u>Winter</u> (07 Jan. 2021 – 09 Apr. 2021)	16,400
<u>Summer</u> (10 Apr. 2021 - 14 Jul. 2021) (16 Aug. 2021 - 14 Oct. 2021)	8,200
<u>Fall & Peak Season</u> (15 Jul. 2021 - 15 Aug. 2021) (15 Oct. 2021 – 16 Dec. 2021)	12,300

- All rates are quoted in US dollars, per night and are subject to change without notice. Availability on demand only.
- All rates include full English breakfast, VAT and are subject to 10% Service Charge. The Government of Barbados has mandated an additional tax of US\$17.66 per bedroom, per night on hotel room accommodations. The current VAT rate is 10% for accommodation. Any new Government taxes, levies and surcharges will be borne by the guest.
- Christmas 2020 is a fourteen-night stay minimum stay commencing arrival between 18 - 23 December 2020.



Inclusive Features:

- Complimentary Fast Track upon arrival.
- Roundtrip airport transfers.
- Welcome by Airport Concierge on arrival.
- Champagne and canapés on arrival.
- Personalized guest in-Suite registration.
- Tropical fruit in room on arrival
- Complimentary WiFi.
- Full English breakfast daily.
- Complimentary non-alcoholic beverages throughout the stay.
- Unlimited use of tennis courts.
- Unlimited non-motorized Watersports.
- Extensive use of the fitness facility at the Spa.
- Facsimile machine.
- Complimentary laundry service.
- One complimentary beach bag per bedroom.
- One complimentary international and local newspaper each day.
- 1 complimentary 60 min. full body massage or 1 round of golf at The Country Club per person.
- Complimentary day access to The Treehouse Club dedicated children's facility.
- Complimentary dinner for children aged 0 to 12 inclusive in the Summer for the period 10 April – 31 October 2021 from the Kids' Buffet or Kids' Menu.



THE NORTH PENTHOUSE

Guest Capacity:	10
Size:	7,360 sq. ft. - 683.77 m ²
Location:	Turtle Wing
View:	Ocean & Garden
Rooms Available:	4

